



HANOI
TORONTO
SCHOOL

iSP

International
Schools
Partnership

FOR CHILDREN
FROM INTRO
TO GRADE 7

FROST EXPLORERS CAMP

Ignite Your Curiosity & Adventure



December 15 – 19, 2025



Early Years & Lower Primary (Intro-G2)



Middle & Upper Primary (G3-5)



Middle School (G6-7)

**REGISTER
now!**

**RECEIVE EXCLUSIVE OFFER
FOR HTS EARLY BIRDS**





HANOI
TORONTO
SCHOOL



International
Schools
Partnership

FRST EXPLORERS CAMP OVERVIEW



Dates: 15 – 19 December 2025

Time: 8:00 AM – 4:00 PM

Theme: Curiosity, Celebration, and Connection

Registration: From November 15th to November 28th 2025.

Fee (meals included): Normal rate: VND10,500,000

Early Bird rate: VND8,400,000

Payment deadline: Normal: November 28th 2025

Early Bird: November 24th 2025

*This winter, let curiosity lead the way at **Hanoi Toronto School!***

***The Frost Explorer Camp** invites students to embark on a joyful learning journey filled with creativity, exploration, and meaningful connections. Designed around the theme “**Curiosity, Celebration, and Connection**” the program encourages children to learn through hands-on experiences, celebrate the season, and build friendships that last.*

Age Groups:

- **Early Years & Lower Primary** (Intro-G2)
- **Middle & Upper Primary** (G3-5)
- **Middle School** (G6-7)

The Winter Camp is **open to both HTS families and friends** offering everyone the chance to experience the excitement of learning and the warmth of community this festive season.

FRST EXPLORERS CAMP

Ignite Your Curiosity & Adventure



HANOI
TORONTO
SCHOOL

iSP

International
Schools
Partnership



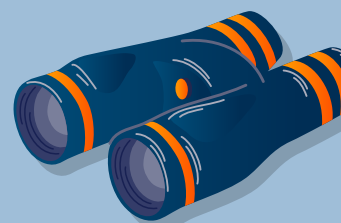
A day in the life of a Winter Explorer

Each day at HTS Winter Camp brings new adventures, creative challenges, and chances to connect. No two days are ever the same for our Winter Explorers!

MASTER TIMETABLE



Time	Early Years & Lower Primary (Intro-G2)	Middle & Upper Primary (G3-5)	Middle School (G6-7)
8:00–8:30	Arrival & Songs	Team Challenge	Icebreaker
8:30–9:30	Sensory Play	STEM/Creative	Entrepreneurship/ STEM
9:30–10:00	Snack & Outdoor	Snack	Snack
10:00–11:30	Art & Science	Coding/Music	Robotics/Film
11:30–12:30	Lunch & Play	Lunch	Lunch
12:30–1:30	Nap/Story	Quiet Reading	Team Debrief
1:30–2:45	Movement Games	Sports/Art	Sports/Media
2:45–4:00	Reflection	Showcase Prep	Reflection & Project Time



FROST EXPLORERS CAMP

Ignite Your Curiosity & Adventure



HANOI
TORONTO
SCHOOL



International
Schools
Partnership

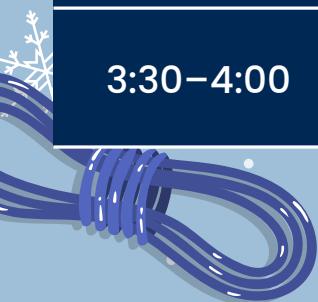


An example of a day in the life of a Winter Explorer

EARLY YEARS & LOWER PRIMARY (INTRO-G2)



Time	Activity	Description
8:00–8:30	Morning Circle & Songs	Welcome greetings, winter songs, and setting the day's theme.
8:30–9:30	Sensory Science	"What melts ice?" hands-on experiment; exploring color mixing in snow-dough.
9:30–10:00	Snack & Outdoor Play	Free play on playground; gross motor activities.
10:00–11:30	Winter Art Creation	Handprint snowmen and tissue-paper snowflakes.
11:30–12:30	Lunch & Free Play	Social lunch time followed by center-based play.
12:30–1:30	Quiet Rest / Storytime	Read-aloud story and quiet rest time.
1:30–2:45	Music & Movement	Freeze dance, scarf movement, and rhythm play.
2:45–3:30	Craft Reflection	Create 'My Winter Day' drawing to share.
3:30–4:00	Wrap-Up Circle	Song, reflection, and goodbye greetings.



FROST EXPLORERS CAMP

Ignite Your Curiosity & Adventure





HANOI
TORONTO
SCHOOL



International
Schools
Partnership

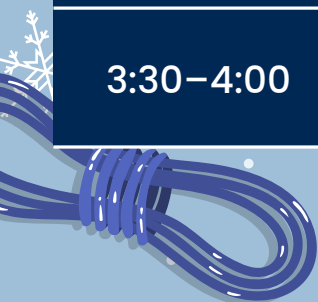


An example of a day in the life of a Winter Explorer

MIDDLE & UPPER PRIMARY (G3-5)



Time	Activity	Description
8:00–8:30	Team Builder	Icebreaker challenge or trivia quiz.
8:30–9:30	STEM Workshop	Design an insulated “winter shelter” to keep ice from melting.
9:30–10:00	Snack Break	Informal peer sharing time.
10:00–11:30	Creative Writing & Art	Write 'A Gift of Curiosity' story; illustrate with winter motif art.
11:30–12:30	Lunch & Social Hour	Peer mentoring with younger students or lunch outdoors.
12:30–1:30	Quiet Reading/Reflection	Independent reading or mindfulness drawing.
1:30–2:45	Sports & Movement	Gym relay or small team basketball.
2:45–3:30	Showcase Prep	Prepare posters or presentations for end-of-week Expo.
3:30–4:00	Debrief & Dismissal	Reflect on teamwork and learning goals.



FROST EXPLORERS CAMP

Ignite Your Curiosity & Adventure





HANOI
TORONTO
SCHOOL



International
Schools
Partnership



An example of a day in the life of a Winter Explorer

MIDDLE SCHOOL (G6-7)



Time	Activity	Description
8:00–8:30	Leadership Check-In	Set goals and team expectations for the day.
8:30–9:30	Entrepreneurship Lab	Plan a 'Winter Market' booth—budgeting and product design.
9:30–10:00	Snack & Social Time	Peer collaboration and relaxation.
10:00–11:30	STEM Challenge	Build a small-scale sled using recyclable materials.
11:30–12:30	Lunch & Discussion	Leadership talk or team-building debate.
12:30–1:30	Film & Media Workshop	Storyboard winter stories for filming/editing projects.
1:30–2:45	Sports & Fitness	Indoor fitness relays and team challenges.
2:45–3:30	Reflection Journals	Leadership logs—what worked, what can improve.
3:30–4:00	Wrap-Up & Announcements	Daily awards, planning for tomorrow's project.



FROST EXPLORERS CAMP
Ignite Your Curiosity & Adventure



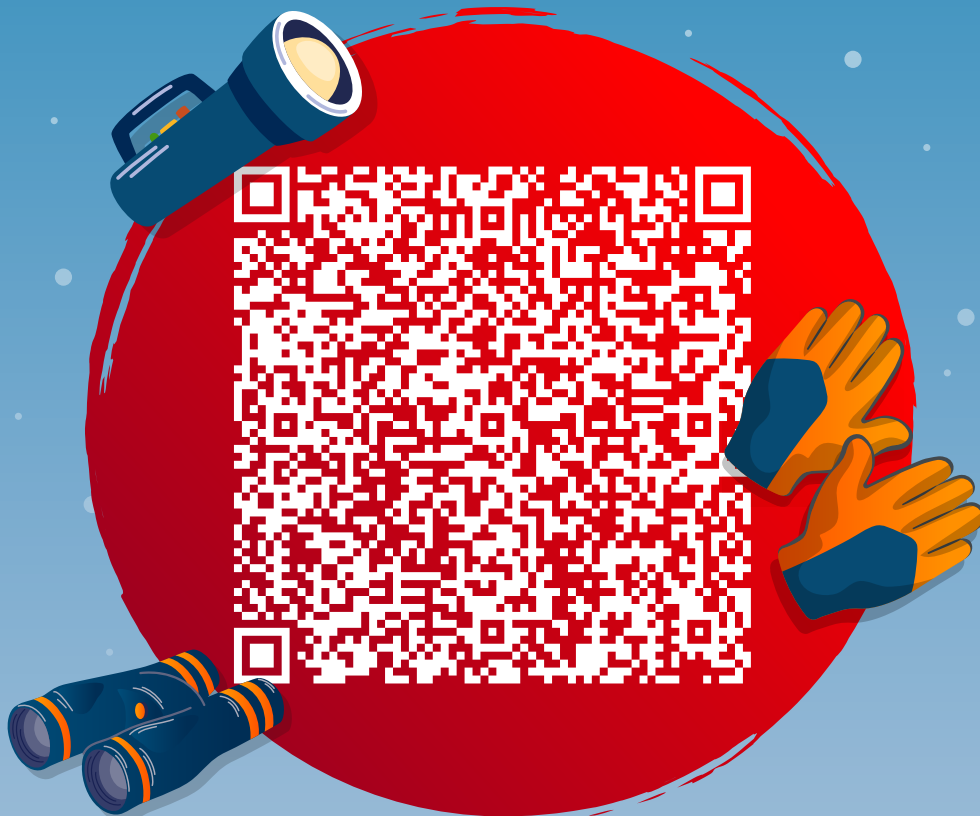


HANOI
TORONTO
SCHOOL



International
Schools
Partnership

REGISTER HERE!



**RECEIVE EXCLUSIVE OFFER
FOR HTS EARLY BIRDS**

FROST EXPLORERS CAMP

Ignite Your Curiosity & Adventure